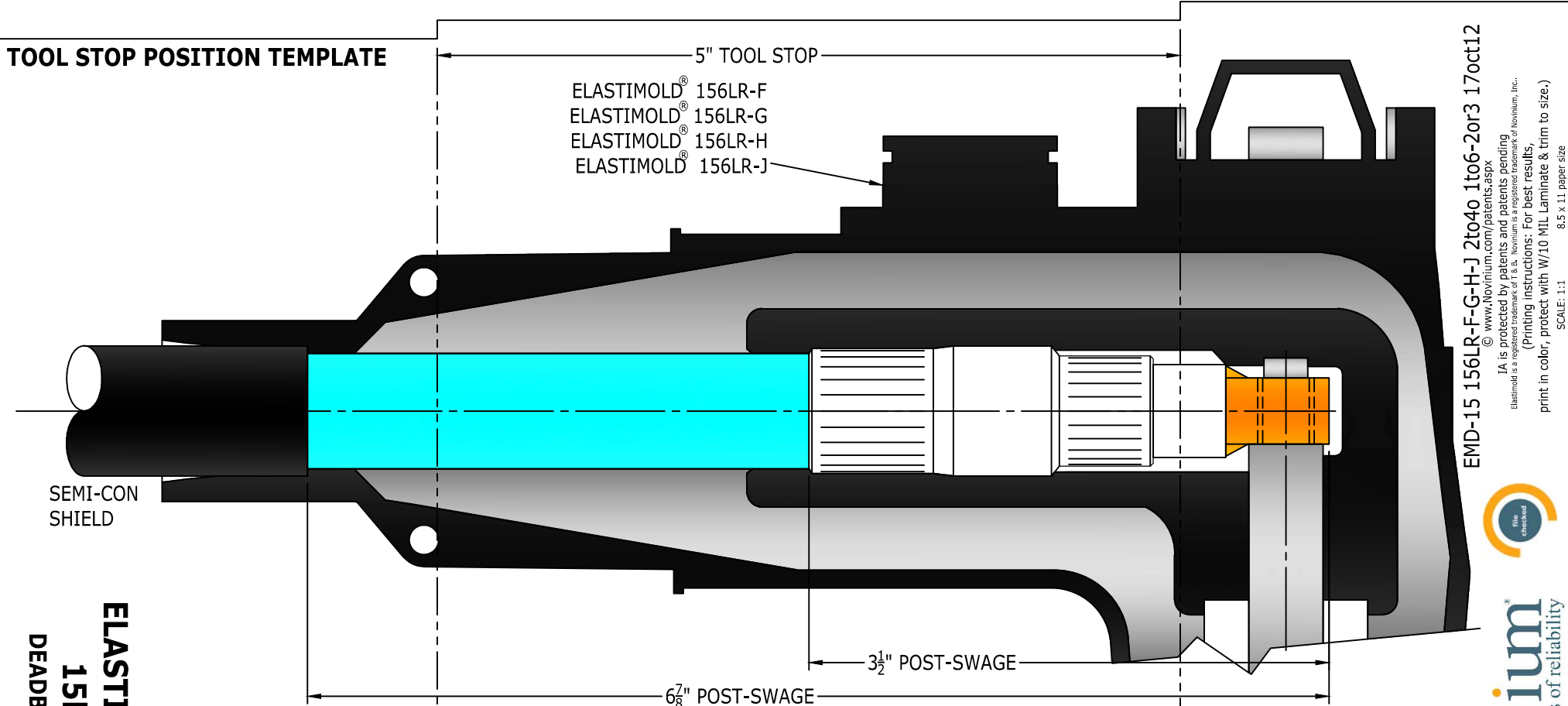


**TOOL STOP POSITION TEMPLATE**



ELASTIMOLD® 156LR-F  
 ELASTIMOLD® 156LR-G  
 ELASTIMOLD® 156LR-H  
 ELASTIMOLD® 156LR-J

SEMI-CON SHIELD

**ELASTIMOLD®**  
**15KV**  
**DEADBREAK**

5" TOOL STOP

6 <sup>7</sup>/<sub>8</sub>" POST-SWAGE

3 <sup>1</sup>/<sub>2</sub>" POST-SWAGE

6 <sup>5</sup>/<sub>8</sub>" PRE-SWAGE

5 <sup>5</sup>/<sub>8</sub>"

TOOL STOP

1-2, 2-2, 3-2, 4-2, 5-2, 5-3,  
 6-2, or 6-3 PRE-SWAGE  
 INJECTION ADAPTER (IA)

1 <sup>3</sup>/<sub>8</sub>"

SEMI-CON SHIELD

INSULATION RANGE  
 156LRF 0.660-0.820  
 156LRG 0.780-0.950  
 156LRH 0.870-1.050  
 156LRJ 1.000-1.145

3 <sup>3</sup>/<sub>4</sub>"

1 <sup>3</sup>/<sub>4</sub>"

COMPRESSION CONNECTOR 2,  
 1, 1/0, 2/0, 3/0 or 4/0

The final length should be within 1/8" (3mm) of the given Post-Swage length.

**INSULATION CUT BACK TEMPLATE**

EMD-15 156LR-F-G-H-J 2to4o 1to6-2or3 17oct12

© www.novinium.com/patents.aspx  
 IA is protected by patents and patents pending.  
 Elastimold is a registered trademark of I.T.S. Novinium is a registered trademark of Novinium, Inc.  
 (Printing instructions: For best results, print in color, protect with W/10 MIL Laminate & trim to size.)  
 SCALE: 1:1  
 8.5 x 11 paper size



**novinium**  
 masters of reliability

eng  
chk