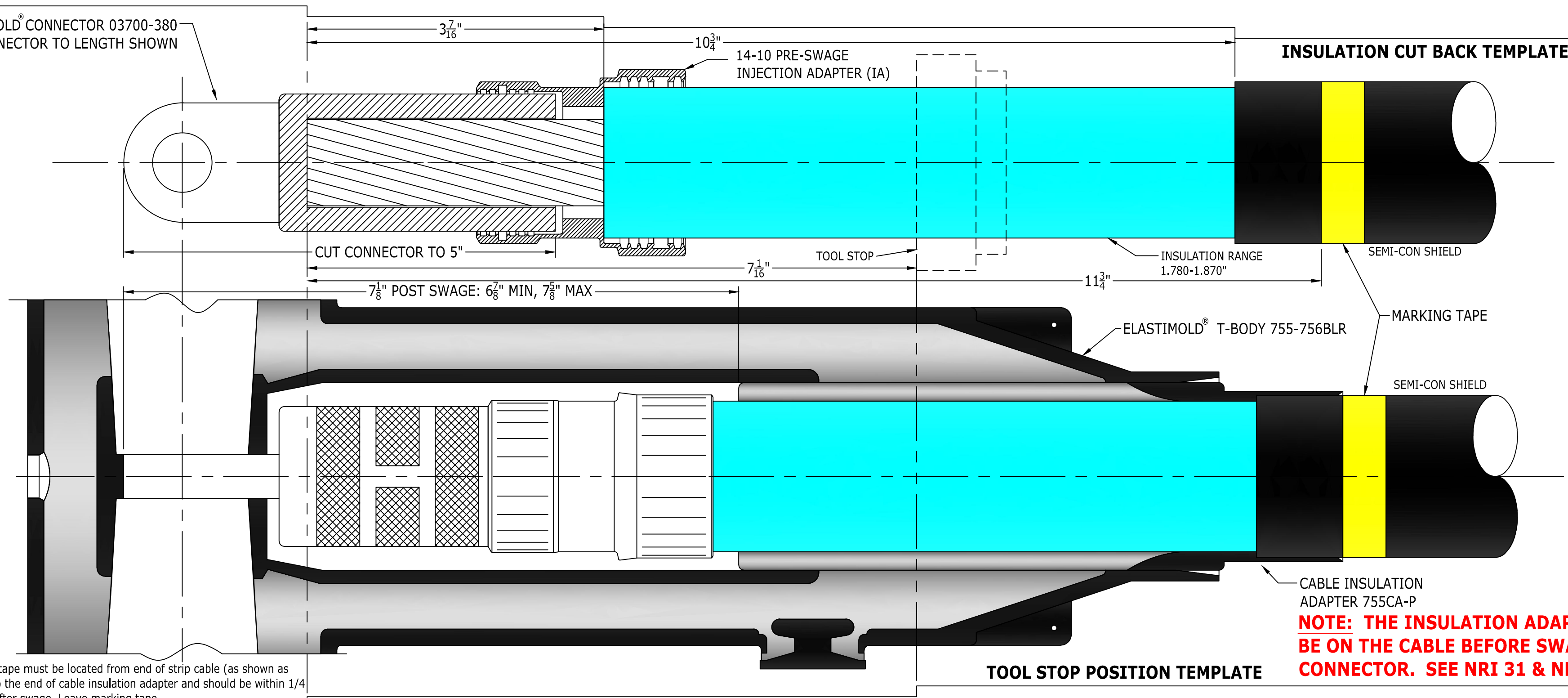


ELASTIMOLD® CONNECTOR 03700-380
CUT CONNECTOR TO LENGTH SHOWN

ELASTIMOLD® 35KV



INSULATION CUT BACK TEMPLATE

SEMI-CON SHIELD

MARKING TAPE

SEMI-CON SHIELD

ELASTIMOLD® T-BODY 755-756BLR

CABLE INSULATION
ADAPTER 755CA-P

TOOL STOP POSITION TEMPLATE

**NOTE: THE INSULATION ADAPTER MUST
BE ON THE CABLE BEFORE SWAGING THE
CONNECTOR. SEE NRI 31 & NRI 32**

EMD-35 755-756BLR 750 14-10 28nov12

© www.novinium.com/patents.aspx

IA is protected by patents and patents pending

ELASTIMOLD is a registered trademark of Thomas & Betts Corp. novinium is a registered trademark of novinium.
(Printing instructions: For best results, print in color, protect w/5mil laminate and trim to size.)



novinium
masters of reliability



8.5 x 21 paper size

SCALE: 1:1

The marking tape must be located from end of strip cable (as shown as pre-swage) to the end of cable insulation adapter and should be within 1/4 inch [6mm] after swage. Leave marking tape.