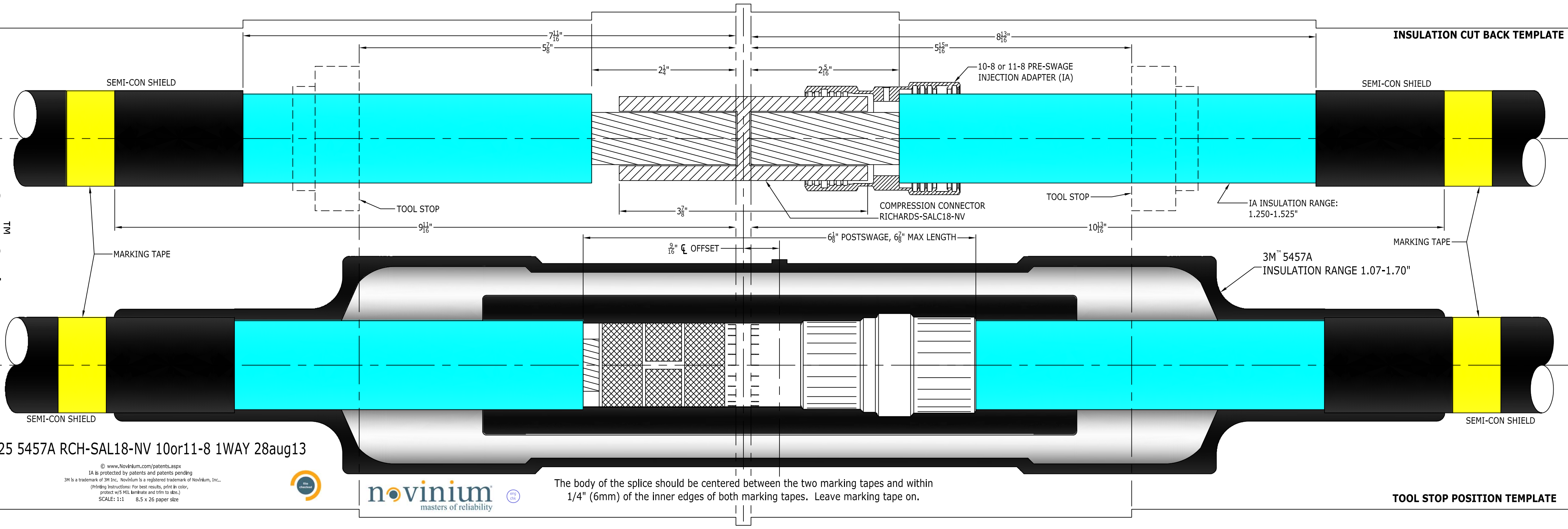


3M™  
25KV



3M-25 5457A RCH-SAL18-NV 10or11-8 1WAY 28aug13

© www.Novinium.com/patents.aspx  
IA is protected by patents and patents pending  
3M is a trademark of 3M Inc. Novinium is a registered trademark of Novinium, Inc..  
(Printing instructions: For best results, print in color, protect w/5 MIL laminate and trim to size.)  
SCALE: 1:1 8.5 x 26 paper size



The body of the splice should be centered between the two marking tapes and within 1/4" (6mm) of the inner edges of both marking tapes. Leave marking tape on.

TOOL STOP POSITION TEMPLATE